



Components for Creating Your Own
Handling Systems

PARTS LIST

Highway 66 South
P.O. Box 786, Rogersville, TN 37857
(423) 235-4163 • fax (423) 235-6076

Blue Tempered Spring Steel

Stock Sizes Available

Thickness	3/4	1	1 1/4	1 1/2	1 3/4	2	2 1/4	2 1/2	3	3 1/2	4	4 1/2	5	5 1/2	6	6 1/2	7	8	10	
.062 Gauge	X	X	X	X	X	X	X	X	X	X	X	X	X	X	X	X	X	X	X	X
.094 Gauge		X	X	X		X		X	X		X		X		Other .094 Material upon Request					
.032 Gauge	Available upon Request																			

Standard Slots (Horizontal)

- 9/32"
- 11/32"
- 13/32" x 3 3/4" L.G.

Special Slots (Horizontal)

- 9/32" x 3/4"
- 11/32" x 3/4"
- 13/32" x 3/4"
- 13/32" x 1 3/8"
- 3/8" x 1"
- Square Corner

Vertical Slots

- 9/32" x 7/8"
- 11/32" x 7/8"
- 13/32" x 3/4"
- 13/32" x 7/8"
- 13/32" x 1"

Holes

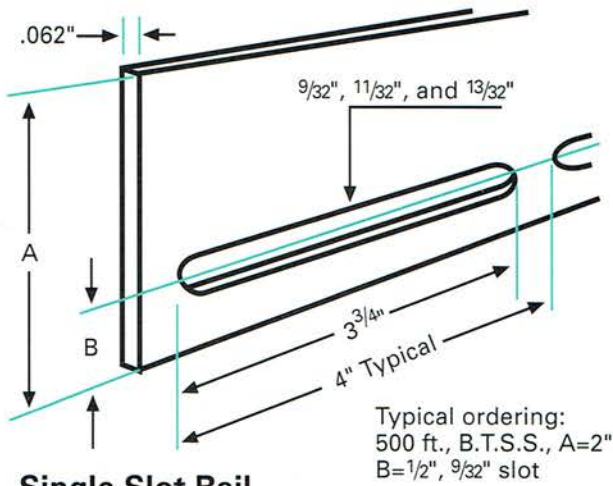
- .170 (#8) Bolt
- .192 (#10) Bolt
- .255 (1/4-20) Bolt
- .317 (5/16-18) Bolt
- .380 (3/8-16) Bolt

.094 Horizontal Dies

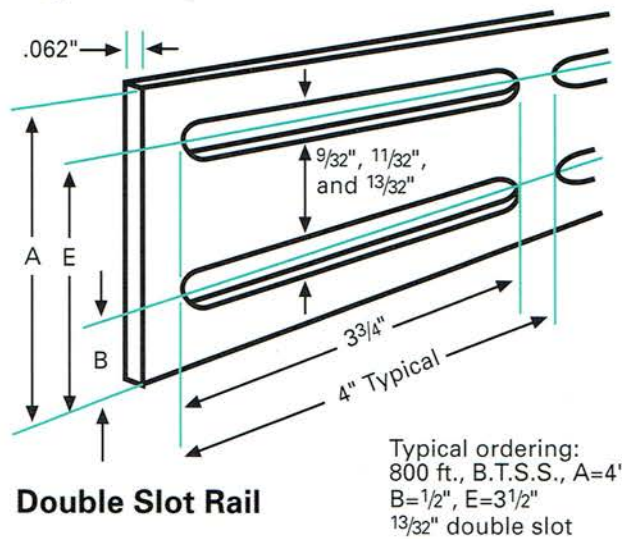
- 13/32" x 1"
- 13/32" x 2"

Standard Rails

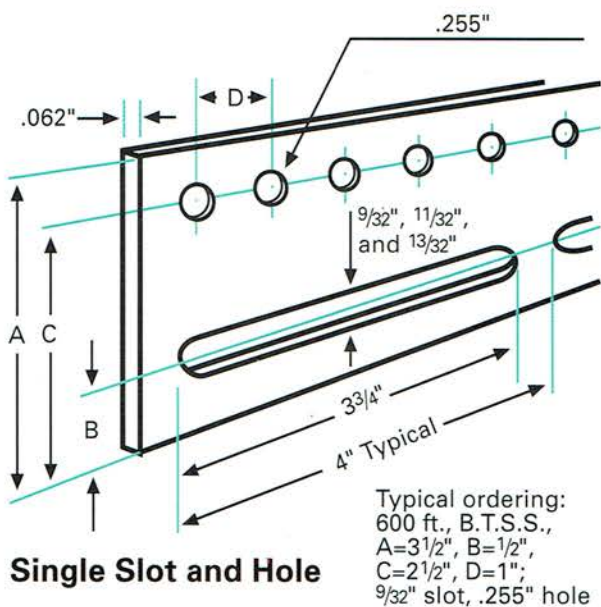
Blue Tempered Spring Steel (Rc 44-48)



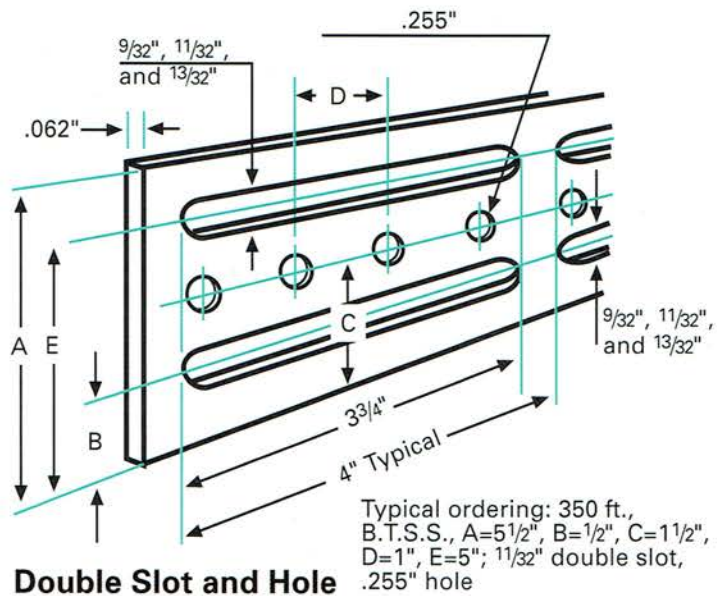
Single Slot Rail



Double Slot Rail



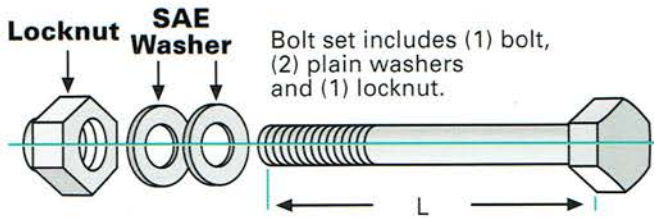
Single Slot and Hole



Double Slot and Hole

Assembly Hardware

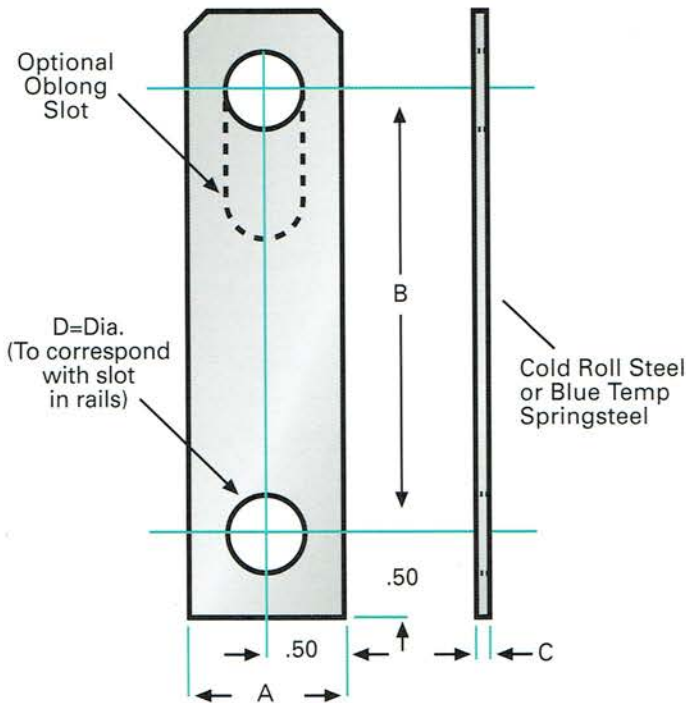
Standard Hex Head Bolt Sets



Thread	L
#8 - 32	Under 1" length, 1/8" increment
#10 - 32	
1/4 - 20	
5/16 - 18	1" to 4" length, 1/4" increment
3/8 - 16	Over 4" length, 1/2" increment

Also available upon request, other size hex head bolt sets, round head bolt sets, and flat head bolt sets.

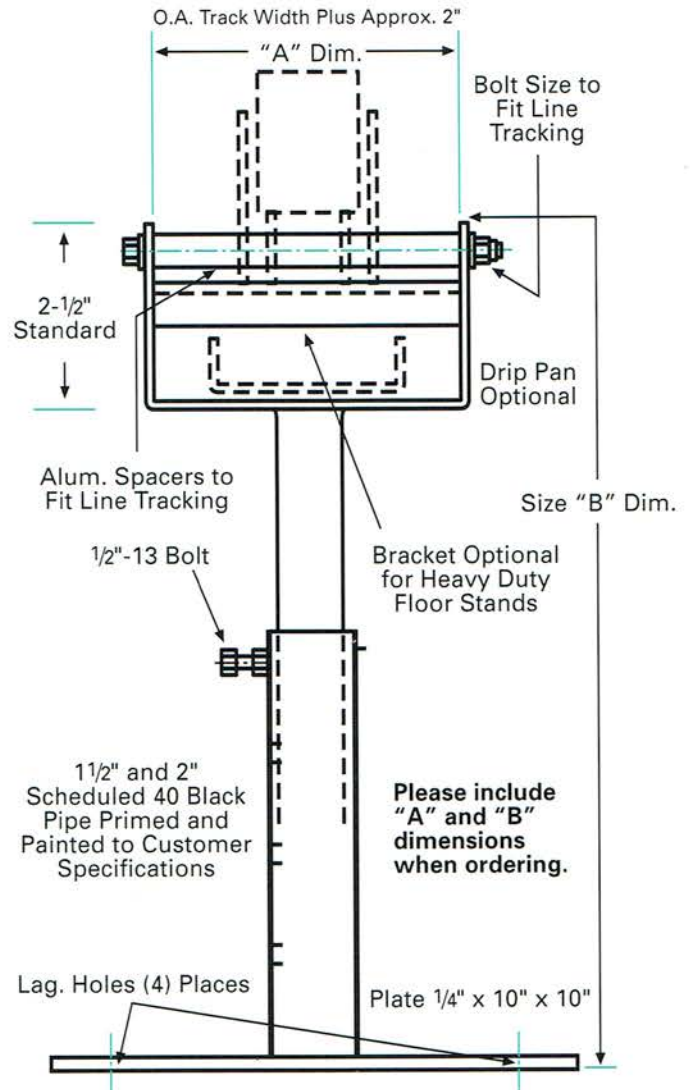
Standard Part Retainer Straps



Part Retainer Rail

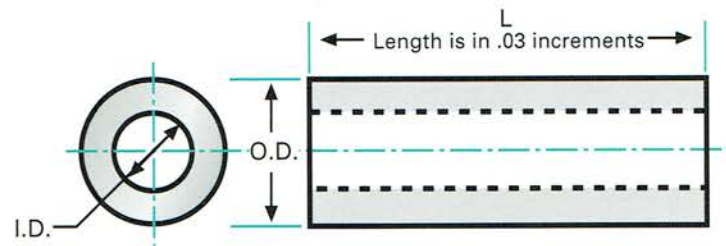
Part retainer rail is recommended for tracking that is to be installed 5'-6' above floor. Also recommended to prevent shingling of sliding parts and/or bubbling of rolling parts where excessive back pressure could exist.

Standard Adjustable Floor Stand



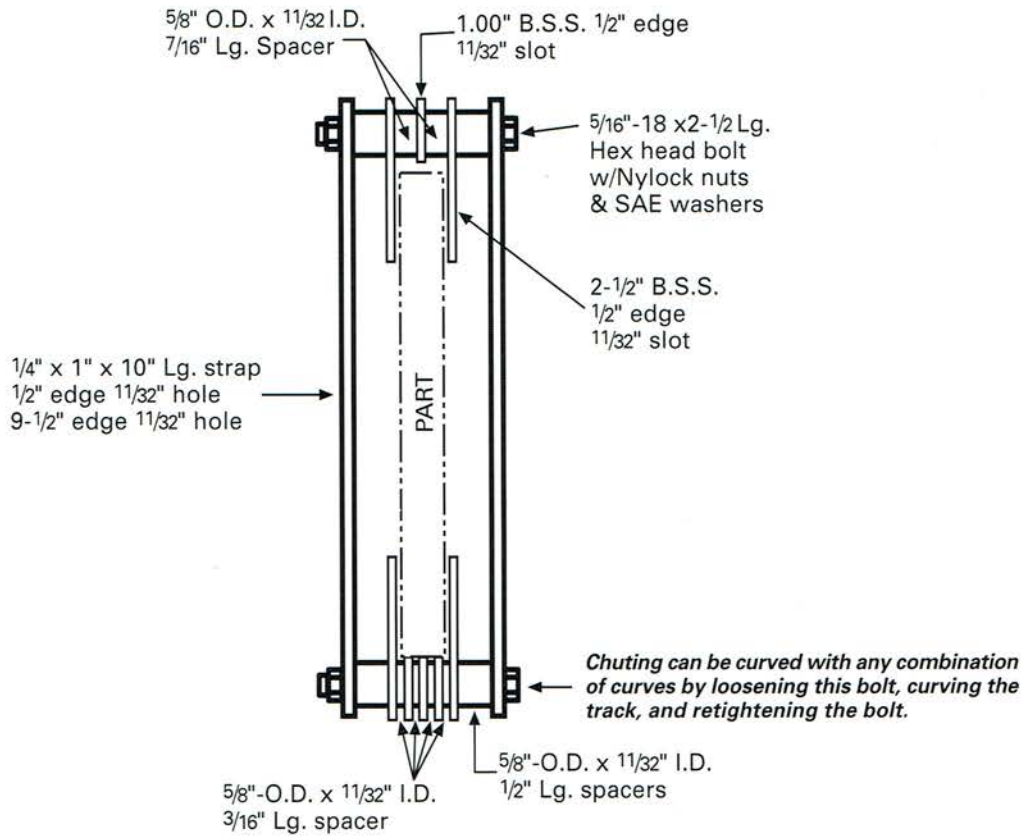
Standard Spacers

Aluminum

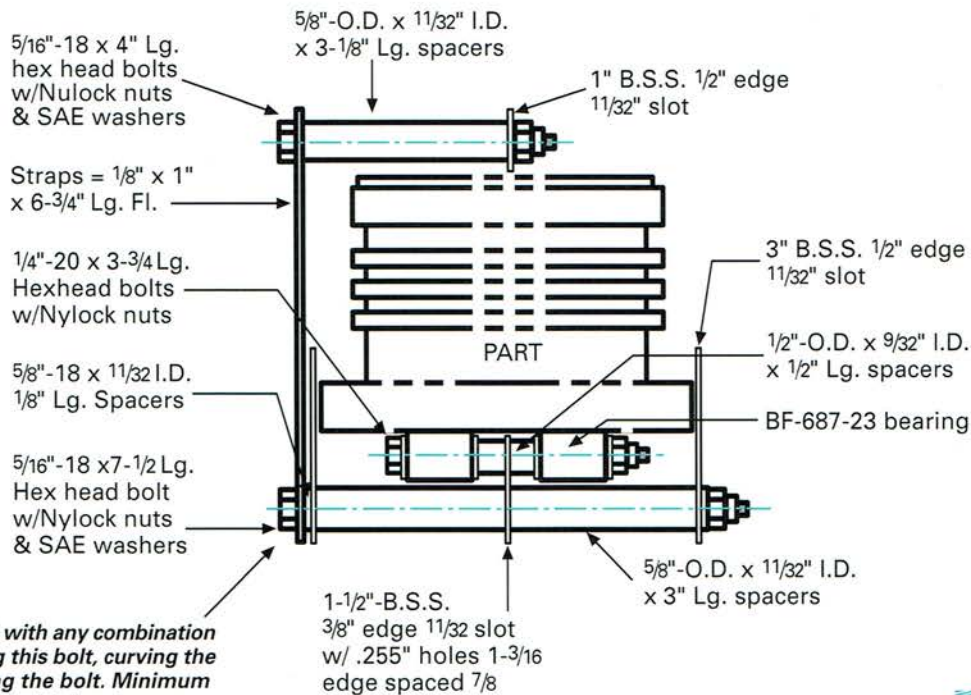


Aluminum Spacers Number	O.D.	I.D.	Bolt Size
380-190	3/8	190	No. 8 or No. 10
500-281	1/2	9/32	1/4 - 20
625-343	5/8	11/32	5/16 - 18
750-380	3/4	3/8	5/16 - 18 or 3/8 - 16

Typical Cross Section for Rolling Parts



Typical Cross Section for Sliding Parts



Chuting can be curved with any combination
of curves by loosening this bolt, curving the
track, and retightening the bolt. Minimum
radius for outmost rail with bearings
pointing to center of the curve:

$$C = \frac{2 (D) (\text{Bearing Length})}{D - (\text{Bearing Dia.}) + .03''}$$



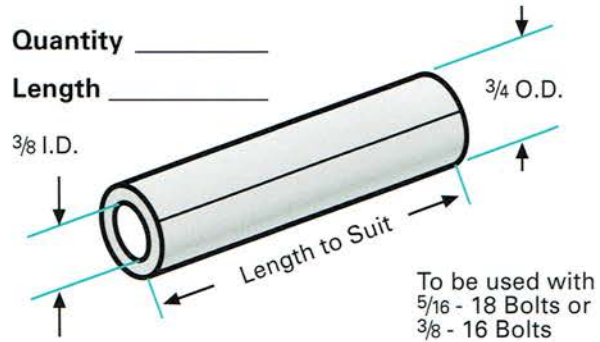
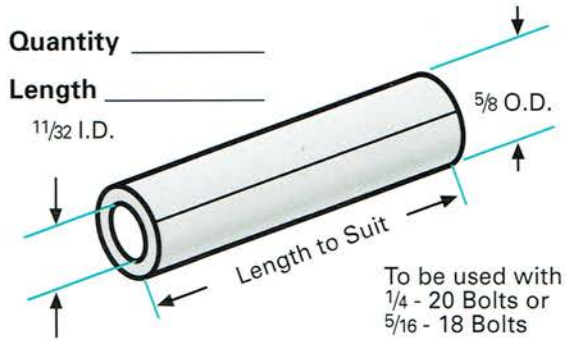
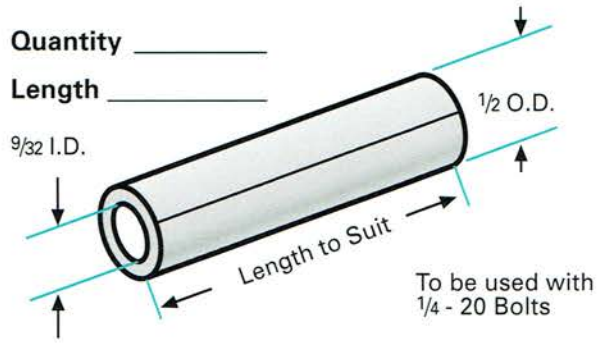
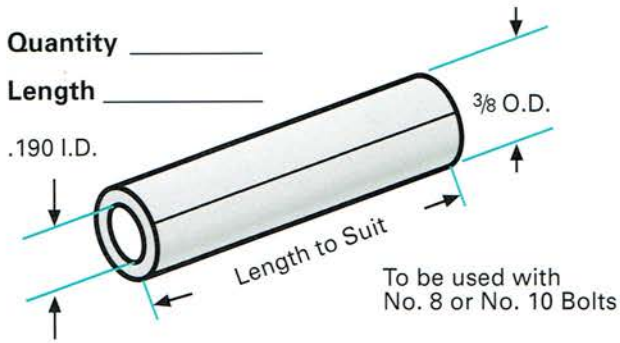
phone (423) 235-4163
fax (423) 235-6076

Standard Spacers (aluminum)

Order Form

Company Name _____ Date _____

Purchase Order _____



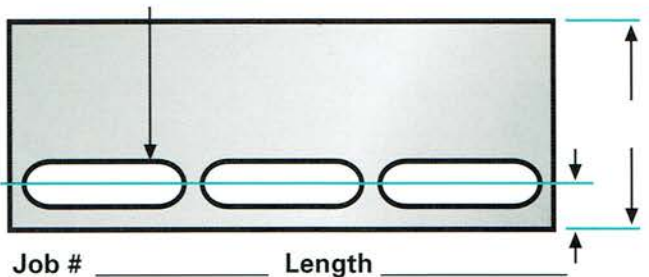
Blue Tempered Spring Steel

Order Form

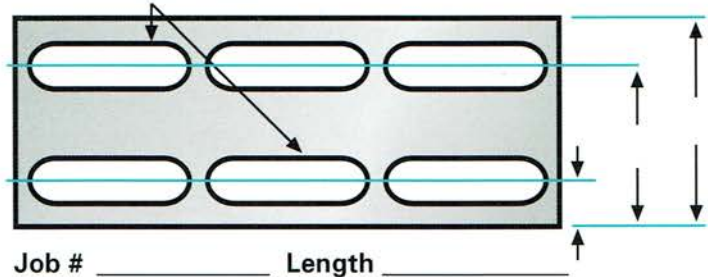
Company Name _____ Date _____

Purchase Order _____

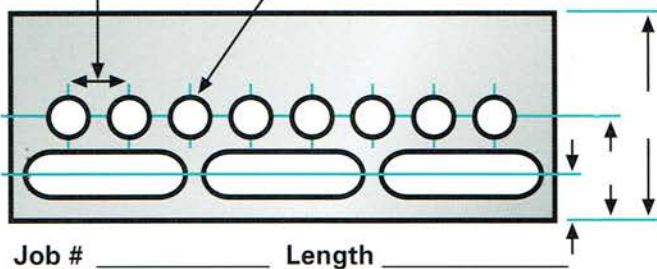
Slot Size _____ x 3 3/4" Lg Slot Type @ 4" c/c



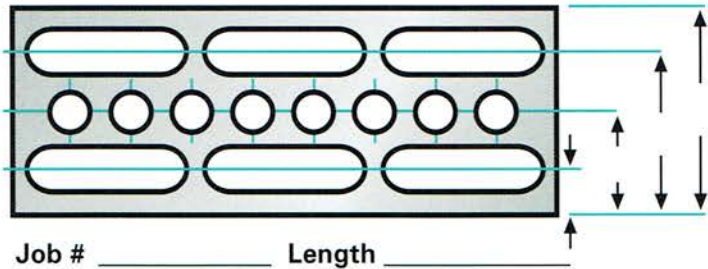
Slot Size _____ x 3 3/4" Lg Slot Type @ 4" c/c



Pitch _____ Dia. Thru _____ Slot Size _____
x 3 3/4" Lg Slot Type
@ 4" c/c



Pitch _____ Dia. Thru _____ Slot Size _____
x 3 3/4" Lg Slot Type @ 4" c/c



This page should be photocopied and used as an order form.